

Trichoderma Td82 (Solstice®)

A NATURAL ENEMY OF PHYTOPHTHORA

Phytophthora root rot in raspberries is caused by a fungus (*Phytophthora fragarii* var. *rubi*) which spreads very quickly in soil and can rapidly destroy plantations.



Two fungi native to Tasmania, *Trichoderma* Td82 and Td84 have been found to be natural enemies of *Phytophthora*, which decays when these *Trichoderma* races grow nearby (see Fig 1). There are many types of *Trichoderma*, that all have different capabilities. Experiments have shown that *Trichoderma* Td82 and Td84 reduce the level of infection of raspberry canes by *Phytophthora*.



Fig 1: Difference in growth of plants treated with Td82 (left) and Untreated (right).

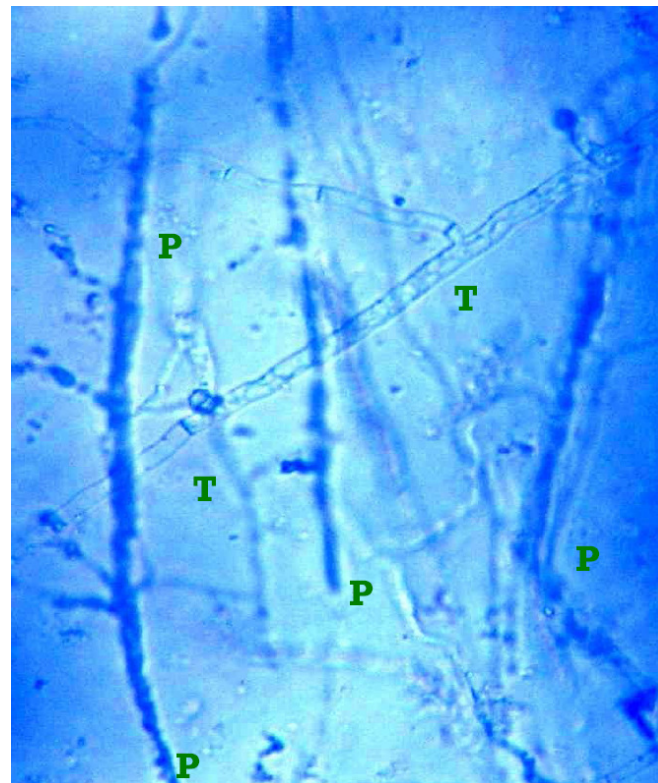
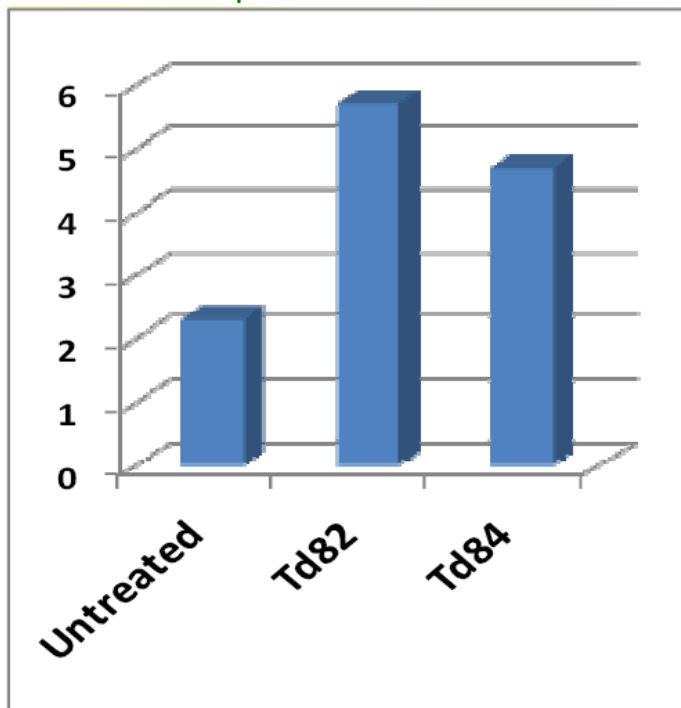


Fig 3: *Phytophthora* (P) is killed and decays as *Trichoderma* Td84 (T) grows nearby

Fig 2: The increase in growth rating of *Trichoderma* Td82 & Td84 treated plants. lsd 0.05=2.8



HEAD OFFICE: 1800 634 204
NSW/WA/SA James 0408 025 139
VIC/TAS Scott 0488 717 515
QLD Andrew 0448 016 551
Email: info@ocp.com.au